



ROSCAP

PARTNER  
PROGRAM



# WELCOME TO ROSCAP



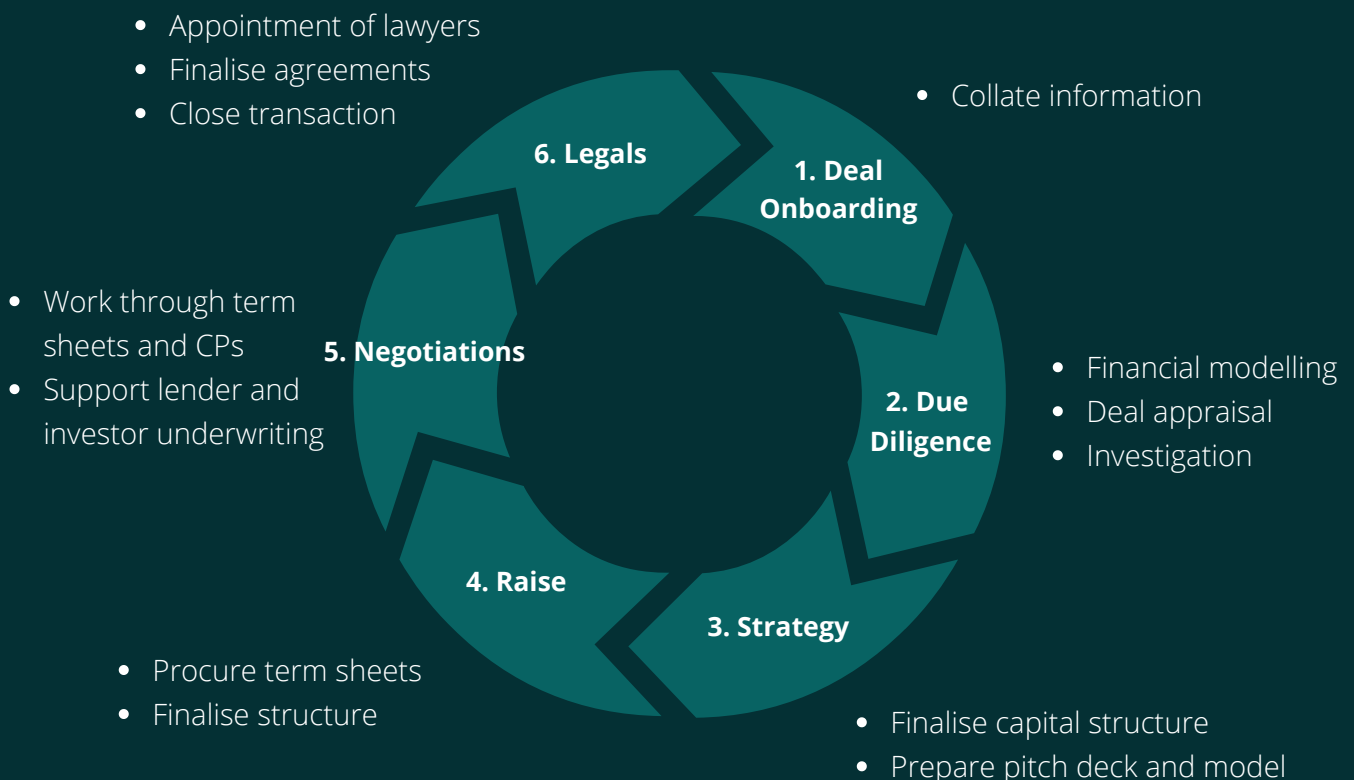
## REAL ESTATE PRIVATE EQUITY & DEBT ADVISORY

Roscap is a real estate private equity and debt firm. We support property developers and investors in raising capital for their projects. Our team are specialists in putting together the best capital structure for your deal. Roscap has established over 1000 relationships with capital partners across the globe. Our capital partners range from private funds to large scale institutional capital.

Roscap has lifetime partnerships with many developers and investors, for whom we act as their real estate advisory arm. Whether you're starting your first project or delivering a masterplan, we can support your needs.

Our in-house financial analysts and planning consultants allow us to truly differentiate ourselves. From acquiring the site, structuring the capital, financially modelling and ultimately executing the exit strategy, Roscap supports through every step in a deal life cycle.

### The ROSCAP Process



# OUR SERVICES

## Equity Capital Raising

- **Facility Types:** Pure (JV) & Preferred Equity
- **Investment Range:** £100,000 to £100,000,000
- **Cost Of Capital:** Pref return and profit share structured on a case-by-case basis
- **Risk Spectrum:** Core, Core+, Value Add, and Opportunistic Opportunities
- **Asset Classes:** All major asset classes including residential, commercial, and mixed-use
- **Timelines:** 6-36 months
- **Geography:** UK & Europe

## Debt Capital Raising

- **Facility Types:** Bridging, Development Finance, Investment Loans, Mezzanine Finance
- **Loan Amount:** £100,000 to £100,000,000
- **Interest Rate:** Starting from 4% p.a.
- **Loan-to-Value Ratio:** Up to 90%
- **Asset Classes:** All major asset classes, including residential, commercial, mixed-use and more
- **Timelines:** 6-36 months
- **Geography:** UK & Europe

## Real Estate Acquisitions and Disposals

- **Investment Range:** £1 million to £250 million
- **Asset Classes:** All major asset classes including residential, commercial, and mixed-use
- **Risk Spectrum:** Core, Core+, Value Add, and Opportunistic Properties
- **Geography:** We operate in the UK and across Europe, providing acquisition and disposal opportunities in key markets

# ABOUT THE PROGRAM



As a professional in the real estate industry, you already interact with clients and projects daily. Our program allows you to maximise your client relationships. Through the program, you will be able to offer enhanced value in addition to your core services. Join hundreds of current partners who are successfully working with Roscap to support their client's capital requirements.

## WHY PARTNER WITH US?



**Offer your clients capital raising services**



**Earn an additional recurring revenue stream with minimal work**



**Enhance the value you offer clients**



**Utilise Roscap-provided marketing materials**

## How The Partner Program Works

1. Join the Program

2. Exclusively refer clients to Roscap

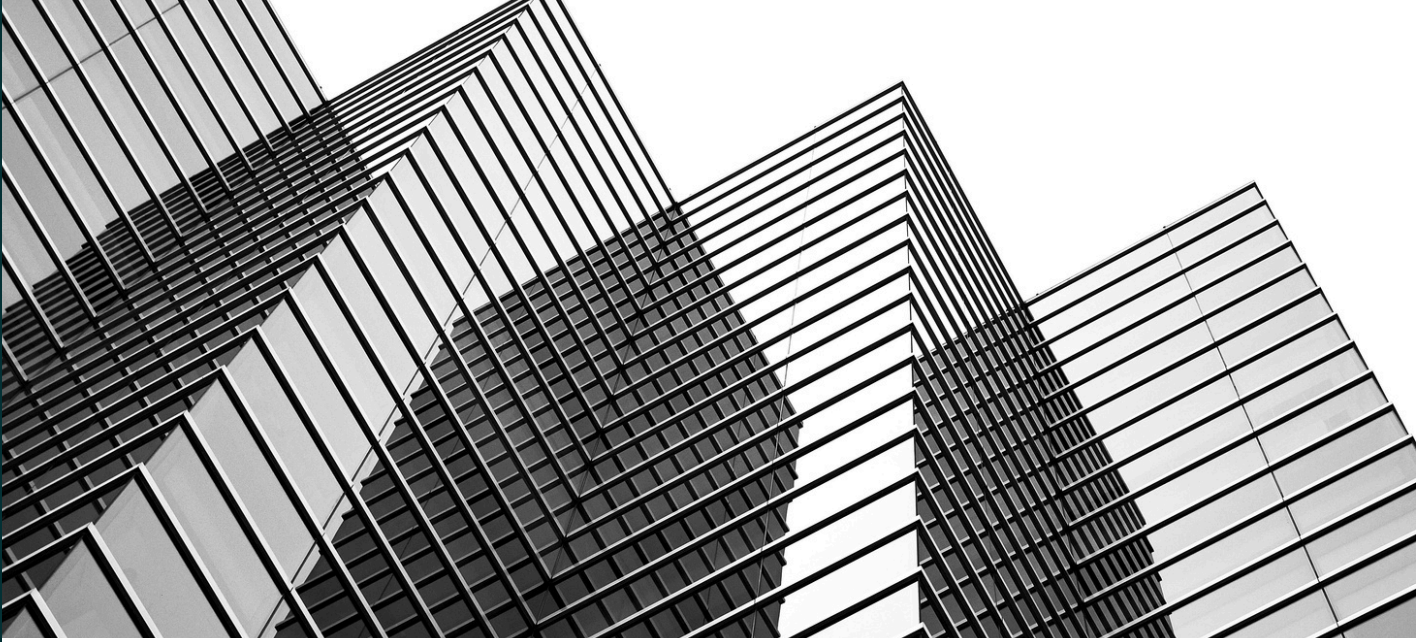
3. Roscap works with client to provide capital solution

4. Receive regular progress updates from Roscap

5. Upon deal completion, receive your referral commissions

## TERMS & CONDITIONS

- The Partner works exclusively with Roscap
- The Partner will receive a 25% introductory referral fee for the first deal completed. For all future transactions with the same Client, the Partner will receive a 10% referral fee in perpetuity.
- All referral fees are paid from the total deal commissions that Roscap receives.



## Contact Us



07850 522789



info@roscap.co.uk



www.roscap.co.uk

ROSCAP

The company logo is centered on the right side of the page. It features a large, stylized gold letter 'R' above the word 'ROSCAP' in a dark teal, serif, all-caps font.